

KELLTON TECH



OPTIMA EDGE —

A Modular IoT Gateway that Enables
Real-time Data Acquisition, Transmission, and Control

Envision is the remote communication modular IoT device that provides fully configurable and secure access to real-time data from remote assets via Ethernet, Wifi, Cellular, or Satellite connections to the proprietary digital platform deployed on the cloud or private network. This edge device can also be configured and connected to any third-party platform.

APPLICATIONS



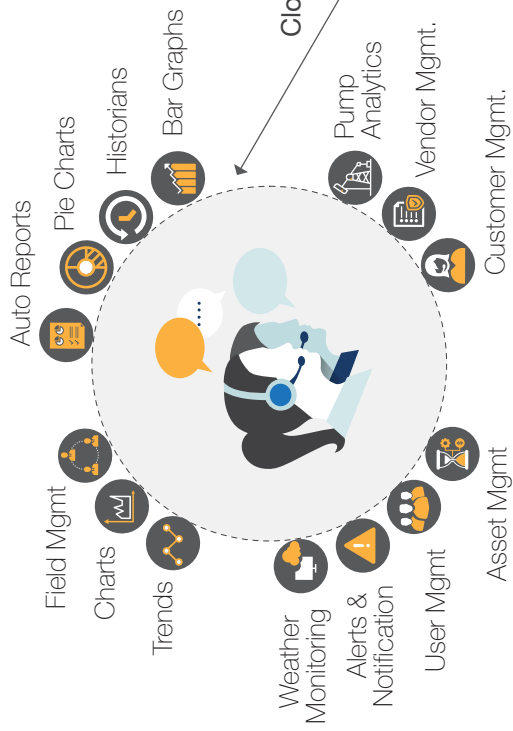
Real-time data acquisition, transmission, and control



Real-time data processing and edge computation

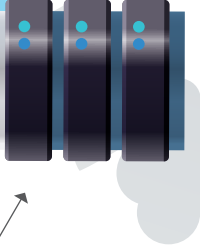


Remote management of devices and assets



Cloud /In-house Server

Cloud Server



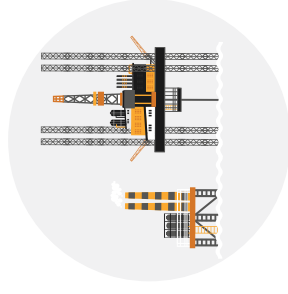
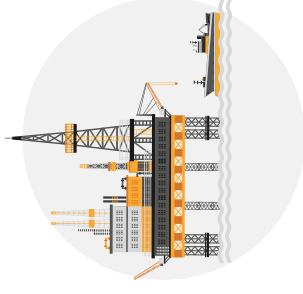
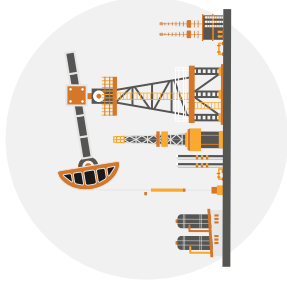
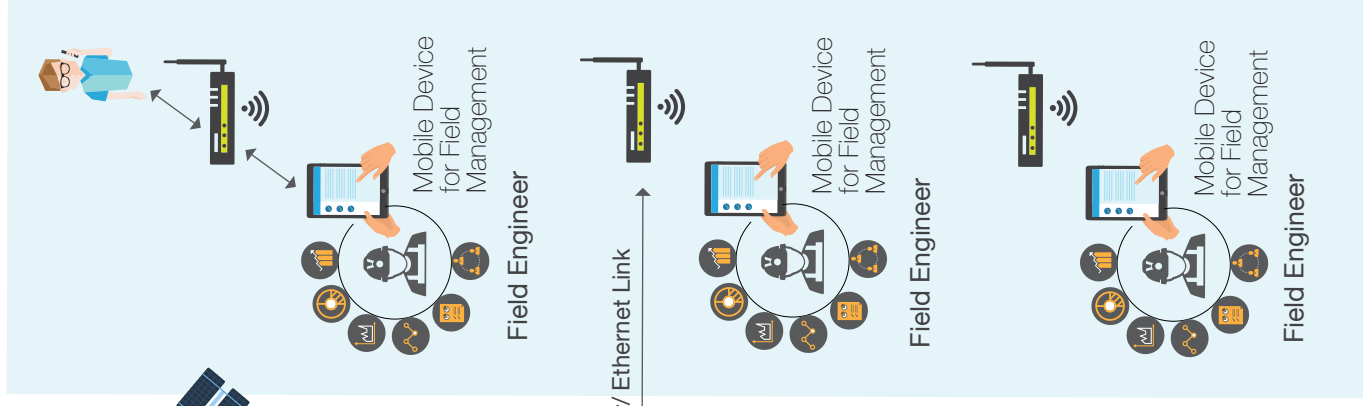
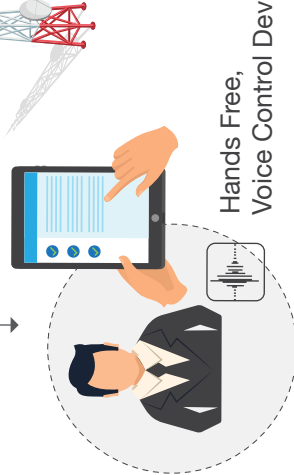
Satellite Link

Fiber/Ethernet Link

Cellular Link

Monitoring & Control Station / Engineers

Real time Monitoring Anytime, Anywhere using IOS, Android device



APPLICATIONS



Remote Asset-monitoring and Management



Inventory Management



Well Production Management



Alert Messaging and Event Detection



Onsite and Remote Configuration,
Provisioning, and Commissioning of
the IoT Devices

SPECIFICATIONS

Enclosure

Box (l x w x h) in mm: 239x207x87
Approximate Weight, lbs [kg]: 2.8 [1.3]
Certifications: CE, UL
Enclosure Rating: IP65

Input Power Support

Power Supply: 90-270 VAC 0.7A 50/60 Hz

Temperature Support

Operating Temperature: -20 to +70 deg C
Storage Temperature: -20 to +70 deg C

Processor

Family: Ti Sitara AM335X
Architecture: ARM Cortex A8
Clock: 600MHz-1000MHz

Primary Memory

Memory Type: DDR3
Memory Size: 512 MB

Secondary Memory

Memory Type: Flash, NAND
Memory Size: 256 MB

External Memory Support

Memory Type: SD Card
Memory Support: up to 128 GB

USB Support

USB Type: 2.0

Ethernet Support

Port Speed: 100-1000Mbps
Distance: 100 Meters (Cat 6 UTP)
Forwarding Rate: 0.75 Mbps
Indicator: Port Light
Connector: RJ45

Wi-Fi Support

Frequency Range: 2.4
Network Standard: IEEE 802.11 b/g/n
Range: 70-250m (230-820ft)
Antenna: On Board

Cellular Support

Frequency Range: Quad-band 850/900/1800/1900
Band Support: LTE FDD, LTE TDD, WCDMA, TD-SCDMA

GPS Support

Antenna: External
Navigation Support: WAAS, EGNOS, MSAS, GAGAN,
QZSS, AGPS

Warranty

Warranty Period: 2 Years
Details: www.kelltontech.com/envision/warranty
Email: envision-support@kelltontech.com

Gateway Interface

Protocol: Modbus-RTU Master
Data Rate: 9600 bps to 12 Mbps
Connector: IP 65 Circular Connector
Isolation: 2kV (Built-in)

Software

Configuration: Device Configuration via Web browser
Web Browser Support: Firefox, Chrome, Safari, Opera
OS Support: Windows, Linux, OSx
Mobile Support: Android, iOS via App
Physical Characteristics
Housing: IP 65 / Metal,
Weight: 500g (1.10 lbs)
Dimensions: 36 x 105 x 140 mm (1.42 x 4.14 x 5.51in)

Environmental Limits

Operating Temperature: -40 to 75C (-40 to 157oF)
Storage Temperature: -40 to 75C (-40 to 157oF)
Relative Humidity: 5 to 95% (non-condensing)
Vibration: IEC 60068-2-16, IEC 60068-2-64
Shock: IEC 60068-2-27
Drop: IEC 60068-2-32

ENVISION MODEL

Description	Envision-Standard	Envision-Premium
Model No	KTE - STD - 01	KTE - PRM - 01
Ethernet	Yes	Yes
Wi-Fi	Yes	
Cellular	-	Yes
Satellite	-	Yes
GPS	Yes	Yes
Antenna Connector	SMA Antenna	
Serial Port	RS-485	RS-485
Protocols	Modbus	Modbus
Conversion	Yes	Yes
Wall Mounting	Yes	Yes
Mechanical Dimensions (LxWxH)	239 x 207 x 87 mm	239 x 207 x 87 mm
Operating Temperature	-20 to +70 °C	-20 to +70 °C
Power Supply	80 - 260 VAC	80 - 260 VAC
RS 485	Baud Rate 9600 bps Hardware Interface 3 Wire (GND, D+, D-) Protocol Modbus RTU	Baud Rate 9600 bps Hardware Interface 3 Wire (GND, D+, D-) Protocol Modbus RTU
Operating Humidity	5 - 95% (No Condensation)	5 - 95% (No Condensation)
LED Indicators	Status of Ethernet	Status GSM, Satellite, Ethernet
Enclosure Type	IP65	IP65
Certification	CE , UL	CE , UL
Warranty	2 Years	2 Years
Ordering Information	North America: +1 844-469-8900 India: +91 124-469-8900 UK: +44 (0) 203-875- 3300 Ireland: +353 (0) 76-604- 2716	North America: +1 844-469-8900 India: +91 124-469-8900 UK: +44 (0) 203-875-3300 Ireland: +353 (0) 76-604-2716

Kellton Tech is a “Born Digital” technology consulting and services company with operations across the US, Europe, and Asia. Our team of 1,500 plus dedicated Kelltonites takes a technology agnostic approach to deliver innovative solutions that drive exceptional business value, empowering...
“Infinite possibilities with Technology”



North America: +1.844.469.8900
 Asia: +91.124.469.8900
 Europe: +353.76.604.2716

General Inquiries:
ask@kelltontech.com

www.kelltontech.com